


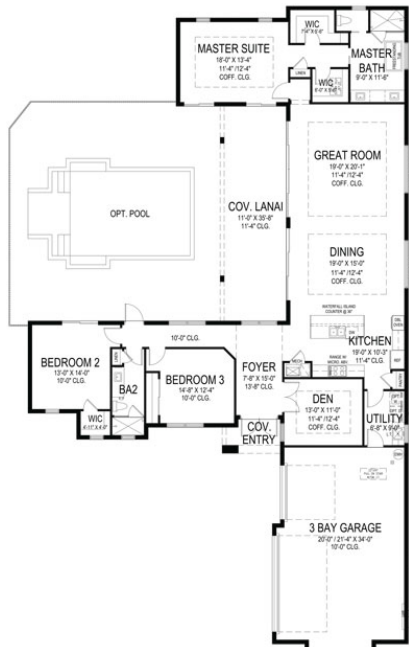


Indian River Club Osprey 10

Home Specifications

Bed:	3
Bath:	2
Garage:	3 
Living SqFt:	2,519
Total SqFt:	3,709

Floorplan



Osprey 10

3 BEDS • DEN • 2 BATHS • 3 BAY GARAGE • 63'-4" x 108" • 3,709 SF
A/C: 2,519 sf • covered entry: 51 sf • covered patio: 392 sf • garage: 747 sf

GHO HOMES

A GREEN BRICK PARTNER

772.257.1100 • GHOHOMES.COM



Brand New Courtyard Pool Home! Move-In Ready! Check out this Custom Home by GHO Homes! 3 bedroom, den, 2 bath, 3 Car Garage, Coastal Courtyard Pool Home, located in the South end of Old Vero Beach, inside the Indian River Club Community. 300 acres of Old Florida beauty. The Oak Hammock Neighborhood is located on Hole 3 that has a gorgeous views of old oak trees. This home has it all! Gourmet Kitchen boasts white shaker style cabinets, silverware drawer, double trash rollout bins, wall ovens, 36" cook-top with stainless steel vented to the outside hood, large kitchen island with quartz counter-tops, backsplash, under cabinet lighting, 8" x 40" tile plank floors thru out the entire home, LED hi-hats thru out, and flat stock trim with cove molding along the perimeter of the main area. The Master Suite boasts a dual sinks, luxurious tub, separate shower, water closet has a window, and there are two large walk-in closets & linen closet between the Master Bedroom and Master Bath. Homeowner must join at least with a Social Membership Package-\$1,750 Initiation Fee, \$1,550 Annual Dues, \$1,000 Food & Beverage Minium, and comes with 5 rounds of golf with cart fee only \$30 Text/Call Diana Leever today for your personal viewing at 772-828-7074.

Lot Number:	10
Address:	236 Oak Hammock Circle, Vero Beach, FL 32962
Total Price:	\$856,924
Sales Agents	Diana Leever dianal@ghohomes.com 772-828-7074 text/call

Home Details

Elevation: Custom Florida Coastal

GHO HOMES 772.257.1100 | ghohomes.com



Seller reserves the right to make changes or modifications to plans, maps, plan specifications, materials, features, and colors without notice. Prices are subject to change without notice. Maps, plans, landscaping and elevation renderings are artist's conceptions, are not to scale, and may not accurately depict the homes or lots as they are built. This brochure is for illustrative purposes only and not a part of a legal contract. Picture and floor plan shown above is likely not the actual home being offered, but a similar home/model.



Lot Details

Lot Size:	160x182x39x161
Lot Length:	182
Property Tax ID:	33403100010009000010

Utilities

Water Service:	County
Power Company:	FPL
Sewer Service:	County

GHO HOMES 772.257.1100 | ghohomes.com



Seller reserves the right to make changes or modifications to plans, maps, plan specifications, materials, features, and colors without notice. Prices are subject to change without notice. Maps, plans, landscaping and elevation renderings are artist's conceptions, are not to scale, and may not accurately depict the homes or lots as they are built. This brochure is for illustrative purposes only and not a part of a legal contract. Picture and floor plan shown above is likely not the actual home being offered, but a similar home/model.