

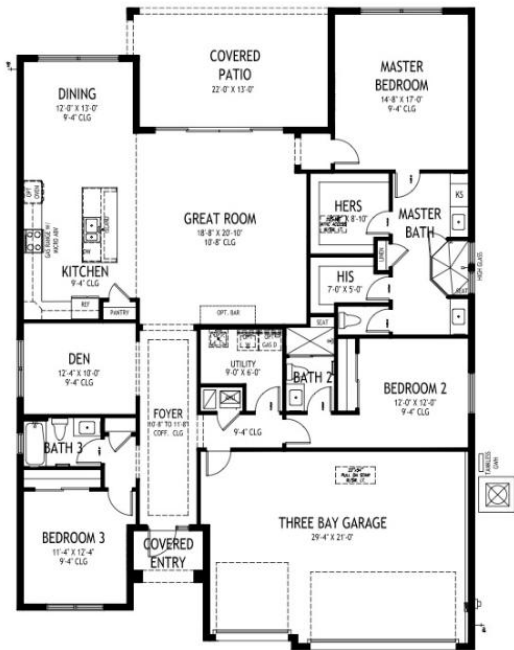


Crystal Falls Capistrano Grande

Home Specifications

Bed:	3
Bath:	3
Garage:	3
Living SqFt:	2,361
Total SqFt:	3,316

Floorplan



Indulge in coastal living at its finest with the popular Capistrano Grande, soon to grace the vibrant Crystal Falls Community built by GHO Homes. With construction underway in November 24' on a spacious lot, this haven offers 2361 sq. ft. of living space, featuring 3 bedrooms, 3 baths, a den, and a coveted 3-car garage. As you enter, you'll be struck by the seamless integration of the great room, kitchen, and dining area, which forms a vibrant central hub perfect for living and entertaining. The gourmet kitchen is loaded with upgrades including a wall oven-microwave combo with a stainless-steel hood, canvas cabinets with soft-close and dovetail finish, adorned with crown molding, quartz countertops, and a stunning tile backsplash. An upgraded 6x36 wood-look tile flooring flows seamlessly throughout. The structural upgrades, include a coffered ceiling in the great room and transom window in the dining area which floods the room with natural light, making it feel bright and airy. With all windows and sliding doors boasting impact glass, safety and peace of mind are assured. The upgraded Island elevation gives the home a stunning curb appeal. Completion date estimated for Summer 25'. For more information, contact Nicole Morris at 772-882-8990.

GHO HOMES
 772.257.1100 • GHOHOMES.COM
CAPISTRANO GRANDE
 3 BEDS • DEN • 3 BATHS • 3 BAY GARAGE • 50' x 70' • 3,316 SF.
 A/C: 2,361 sf. • covered entry: 43 sf. • covered patio: 276 sf. • garage: 636 sf.

Lot Number:	27
Address:	6795 49th Court, Vero Beach, FL 32967
Total Price:	\$619,017
Sales Agents	Nicole Morris 772-882-8990 nicolem@ghohomes.com

Home Details

Elevation:	Island
-------------------	--------

GHO HOMES 772.257.1100 | ghohomes.com



Seller reserves the right to make changes or modifications to plans, maps, plan specifications, materials, features, and colors without notice. Prices are subject to change without notice. Maps, plans, landscaping and elevation renderings are artist's conceptions, are not to scale, and may not accurately depict the homes or lots as they are built. This brochure is for illustrative purposes only and not a part of a legal contract. Picture and floor plan shown above is likely not the actual home being offered, but a similar home/model.



Lot Details

Lot Size:

Lot Length:

Property Tax ID: 32390900010000000027.0

Utilities

Water Service:

Power Company:

Sewer Service:

GHO HOMES 772.257.1100 | ghohomes.com



Seller reserves the right to make changes or modifications to plans, maps, plan specifications, materials, features, and colors without notice. Prices are subject to change without notice. Maps, plans, landscaping and elevation renderings are artist's conceptions, are not to scale, and may not accurately depict the homes or lots as they are built. This brochure is for illustrative purposes only and not a part of a legal contract. Picture and floor plan shown above is likely not the actual home being offered, but a similar home/model.